



[Click to view this email in a browser](#)

FORWARD this message to a friend.

If you received this e-mail from a friend and would like to subscribe, [JOIN OUR MAILING LIST.](#)



online
Currents



NEWS FROM THE WABASH & ERIE CANAL • DELPHI, INDIANA
May 2022



www.wabashanderiecanal.org

Connect with us!

[FACEBOOK](#)

[INSTAGRAM](#)

[YOUTUBE](#)

IN THIS ISSUE!

- *May 7 Cleanup Callout*
- *Volunteer Spotlight*
- *Sponsor a Bench, Panel, or Trail*
- *Join Our Team!*
- *MWF Crew Adventures*
- *School Tours Are Back*

**Volunteer Spotlight:
Tom Peters**

Each month, we want to highlight one of our many volunteers in recognition of their service and to share ways that you can get

TOMORROW: Join for Outdoor Fun



Our first event of the season is just over the horizon! In fact, it's just a few hours away! From **9:00 AM to noon tomorrow (May 7)**, we will band together and tackle a variety of jobs in our park and on our trails to get everything ready for a busy new season at the Canal.

Please **meet at the Speece Picnic Shelter in the middle of the Pioneer Village at 9 AM.** From there we will get our assignments and instructions. We will wrap up our day at noon, when the Carroll County Psi Otes will graciously provide a free lunch to all our workers. To RSVP, please send a quick email to lrcooper@outlook.com and let us know how many will be attending so we have enough food on hand.

involved in our mission of preservation, education, and recreation.

This month, we'll hear from Tom Peters.



What is your volunteer role at the Canal? I'm part of the Monday-Wednesday-Friday Crew, and we do different repairs and construction projects around the park.

Where are you originally from? I'm from Oaklandon, just outside Indianapolis. I was a teacher at Rensselaer for 36 years, and I moved to Monticello with my wife, which is what brought me to this area.

How many years have you been volunteering, and how did you get involved? I've been volunteering since about 2013. I got involved by coming to a volunteer callout event where we had some apple dumplings. My wife sent me to the event, telling me, "You need something to do. Go over there and see what you can do."



Thanks for your support and help as we work together to create a vibrant, beautiful space that visitors from around the country and around the block can enjoy. Our section of the Wabash & Erie Canal wouldn't be the gem it is without the incredible volunteers who make this place so special.

Bench, Trail, and Panel Sponsorships are OPEN!



We are blessed with a beautiful trail system that goes throughout our beloved home city while also highlighting the history of this area. Within our system, there are tons of great resources available to the public: informative panels that recount fascinating history, benches that offer places to rest, and of course the trails themselves!

What is your favorite part of volunteering at the Canal? It sure isn't because of the payday! The camaraderie of being around the work crew brings a lot of us out there. It gets you out of the house, and you get to talk with people. It's a good break from just being at home!

What should others know about volunteering with us?

It's incredible to look at what we have now, and to consider what it was before we started. It's rewarding to think about how this place has been transformed.

All the projects we do are a challenge in some way. But when you're done, you have a sense of pride because of how it looks.

For more information about volunteering with us, click the link below.

VOLUNTEER
TODAY!



Come Join
Our Team!

We are looking for an enthusiastic, organized individual to join our staff as our new Reservations Manager. This position would be for 15 hours per week, Monday-Friday 1-4 PM. For more information, please email: director@canalcenter.org.



However, these resources are ready for new life and adoption by willing donors! One of our big initiatives this year will be to implement some appearance and uniformity standards along our trails, to make sure no bench or panel gets left behind.

When you adopt one of our benches or panels, you are partnering with us for a period of at least ten years, during which we will maintain the bench (or panel), and we will provide a sign indicating your sponsorship of the item. We will work with you to select the proper wording, and it will be something to show your commitment to helping us provide beautiful outdoor spaces to the public in our area.

Bench sponsorships start as low as \$1,000, and panel sponsorships start at \$1,500. For more information or to get your bench started, please email director@canalcenter.org!



We are also seeking sponsors for our network of trails! If you or your business may wish to sponsor one of our many trails for a three-year term, we would display your company logo on our mileage markers along with placement on our website and shout-outs on our social media channels. The trail sponsorships vary based on trail length and traffic, so please reach out to director@canalcenter.org for more

School Tours Are Back!



This month we are dealing with the best kind of logistical problem: our park is jam-packed with visitors!



We have school groups and tour groups coming to visit us, and May will be an especially busy month!



One of our greatest needs is to add to our volunteer base of docents and guides. If you might be interested in serving the community with us, please get in touch! You can use the "Volunteer Today" link above, or you can email: director@canalcenter.org.

Did you know...?

information!

The Monday-Wednesday-Friday Crew Works More Magic



We are so fortunate to have such a resourceful and creative crew with us on Monday-Wednesday-Friday! Recently they have been creating some fun additions to supplement the area down by the historic Leiters Ford Railroad Depot. Above you can see Mac Carlisle, our fearless team captain, in the process of building a handcart to use over at the depot!



You can hold your wedding, corporate meeting, or birthday celebration at the Canal Center?



We offer a variety of options for each different type of event. We offer free wifi and can accommodate up to 300 guests!

[Save your date today!](#)

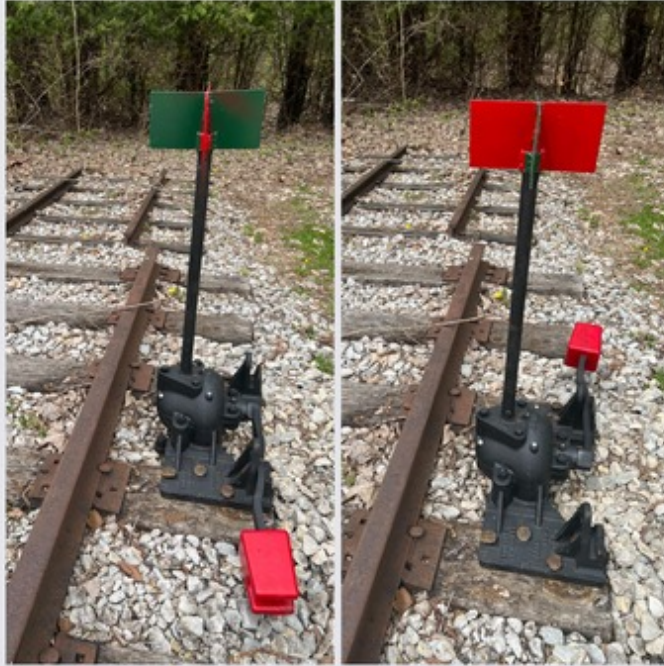


For a complete list of activities please visit us at www.wabashanderiecanal.org

- [Camping](#)
- [Activities](#)
- [Plan an Event](#)
- [Contact Us](#)
- [Membership](#)
- [About Us](#)



Above we see the cart in its final form! The wheels were located on site, but they required some attention to restore them to life. Once the wood frame was installed, the cart was ready to go! When you visit our park this season, make sure you head down to the Depot to check it out.



Speaking of fun stuff at the Depot, above is an old railroad switcher that the crew recently restored and repainted! It provides yet another hands-on exhibit that visitors can experience here at Canal Park.

**The Wabash & Erie Canal E-Newsletter is
brought to you by:**



Delphi Properties, LLC

111 East Main Street, Delphi, IN 46923
Telephone: 765-564-2165/Fax: 765-564-4919

Property & Construction Management since 1958

[FORWARD THIS MESSAGE TO A FRIEND](#)

You are currently signed up to receive our monthly newsletters. If you no longer wish to receive them, reply to this message with "Unsubscribe" in the subject line or click on the following link [Unsubscribe](#)

Carroll County Wabash & Erie Canal, Inc.
1030 N. Washington St.
Delphi, IN 46923
US

[Read](#) the VerticalResponse marketing policy.

vertical DELIVERED BY
response
Try It Free Today!